



## **KODAK** MODEL TEE/MODEL TST

TRENDSETTER Q400/Q800

TRENDSETTER Q400/Q800 UHR

TRENDSETTER NEWS

ACHIEVE T400/T800

ACHIEVE NEWS

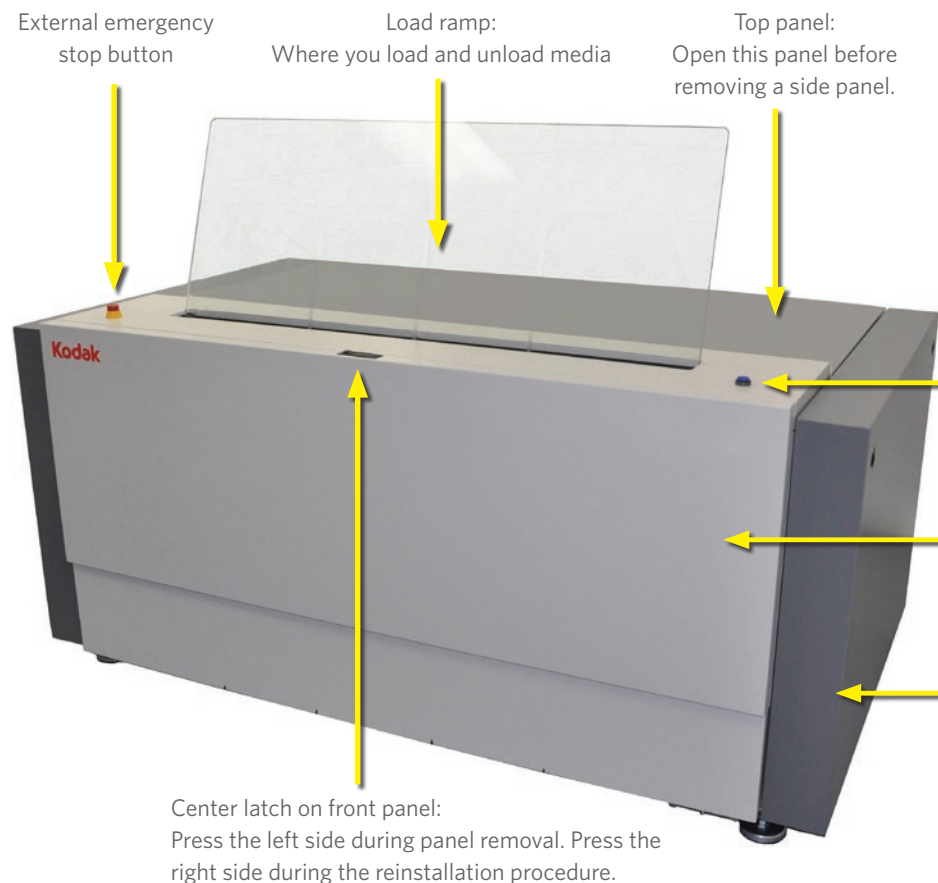
VERISET T400/T800

SEMIAUTOMATIC PLATESETTERS

Visual Reference Guide  
Original Instructions  
English



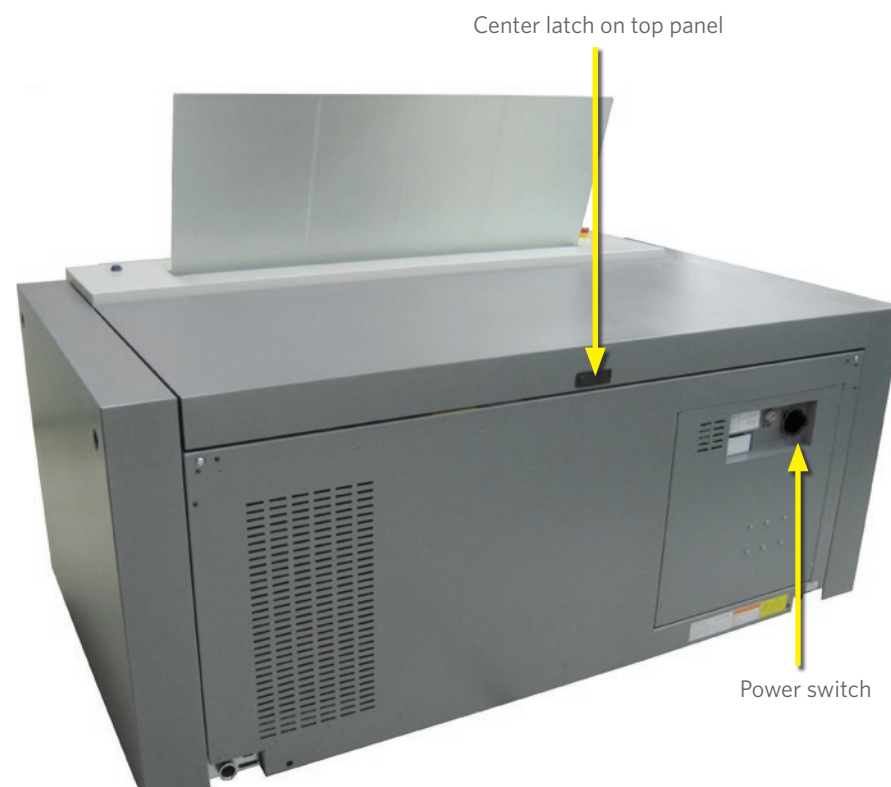
# PLATESETTER OVERVIEW



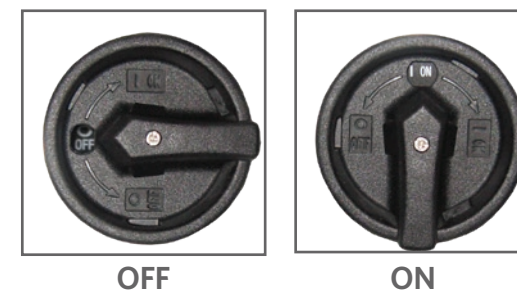
Start button: Push this button to initiate the imaging process.

Front panel: Remove this panel to clean the plate roller and to remove stuck media.

Right-side panel: After opening the top panel, remove this panel to change the intake air filter.

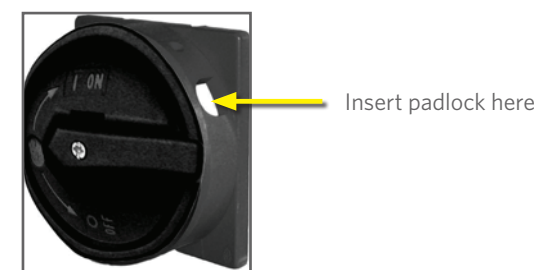


## Power switch



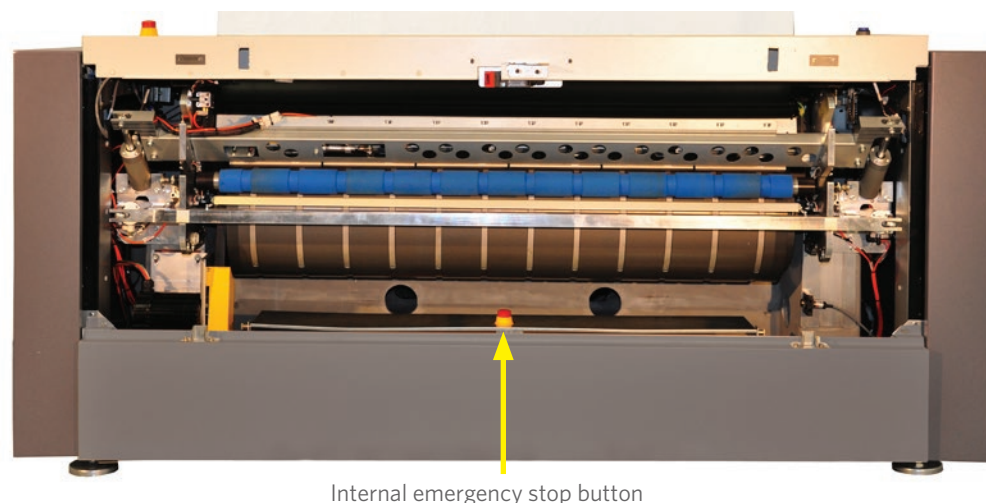
The power switch disconnects power to the output device so that you can safely perform maintenance procedures or retrieve stuck media.

When you are instructed to turn off the power to the output device, turn the switch to the off position, and secure it with a padlock.



## Emergency stop button

The emergency stop button stops laser operation and mechanical movement, but the power remains connected. If either the internal or external emergency stop button is pushed, you must cycle the power before the device can resume regular operation.



To reset the platesetter after activating the emergency stop button:

- 1 Turn the emergency stop button clockwise until it pops up.
- 2 Wait at least 30 seconds.
- 3 Turn the power switch to the Off position.
- 4 Wait 30 seconds and then turn the power switch to the On position.

To safely shut down the Print Console software and the workstation:

- 1 After all jobs are finished and plates are ejected from the device, close Print Console.
- 2 Wait at least 30 seconds.
- 3 Turn the power switch to the Off position.
- 4 Shut down the workstation.



# USING PRINT CONSOLE DEVICE CONTROL SOFTWARE

## Monitoring the Print Console queue

The status is visible from a distance and also shows if the queue is locked.

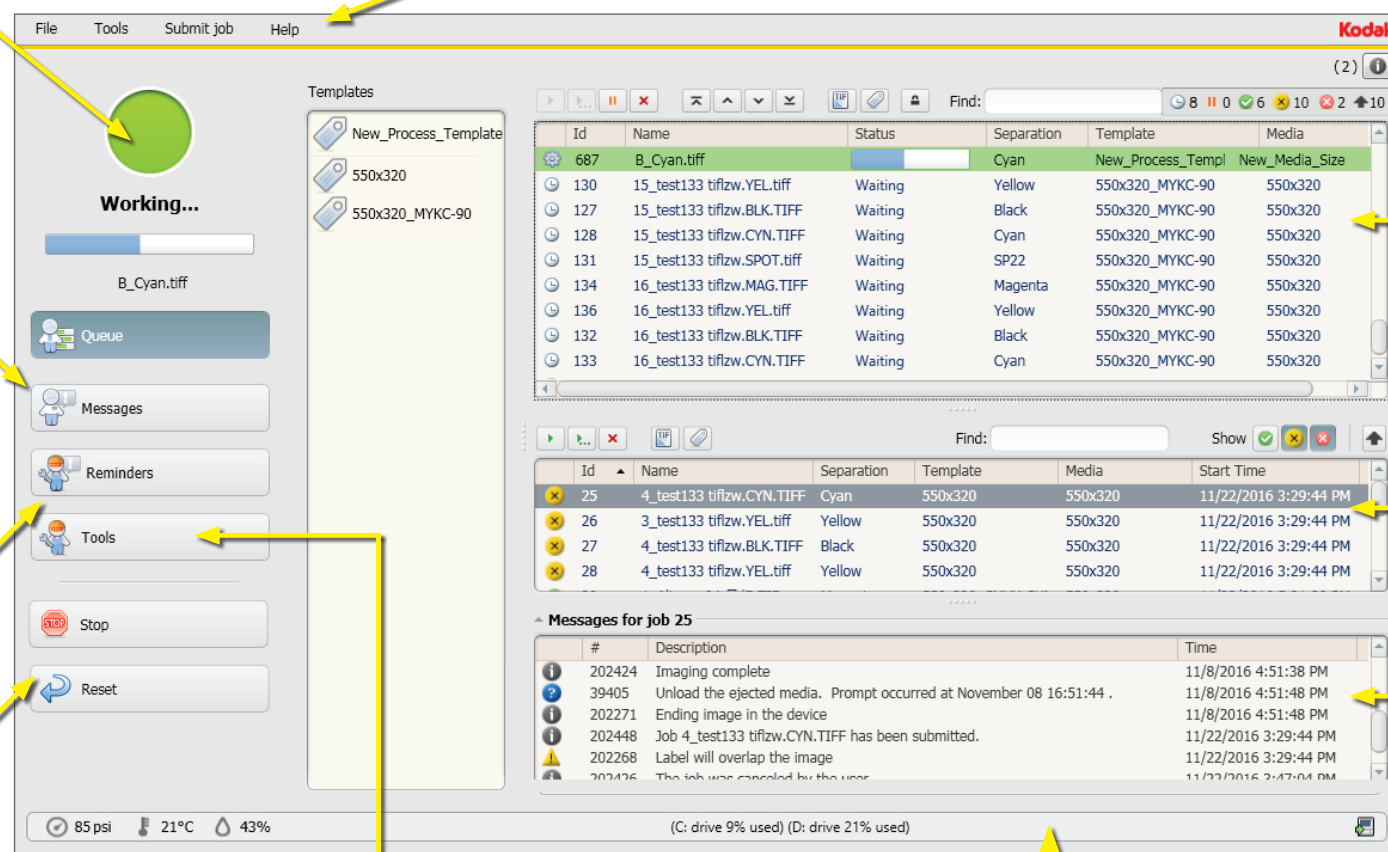
For detailed information about all screen elements, see the Print Console Help.

**View** buttons and menu items control what you see on screen. (Queue shown here)

**Messages** view displays error messages about correcting problems that have suspended operation. See page 10 for an example.

**Reminders** view displays operator maintenance task reminders. See page 4 for more information.

**Operation** buttons allow you to quickly perform everyday tasks: stopping and resetting the device..



Informational messages appear here.

The **Active Queue** displays status and information for jobs currently being processed or waiting to be processed at the output device.

The **Processed Queue** displays status and information for completed jobs.

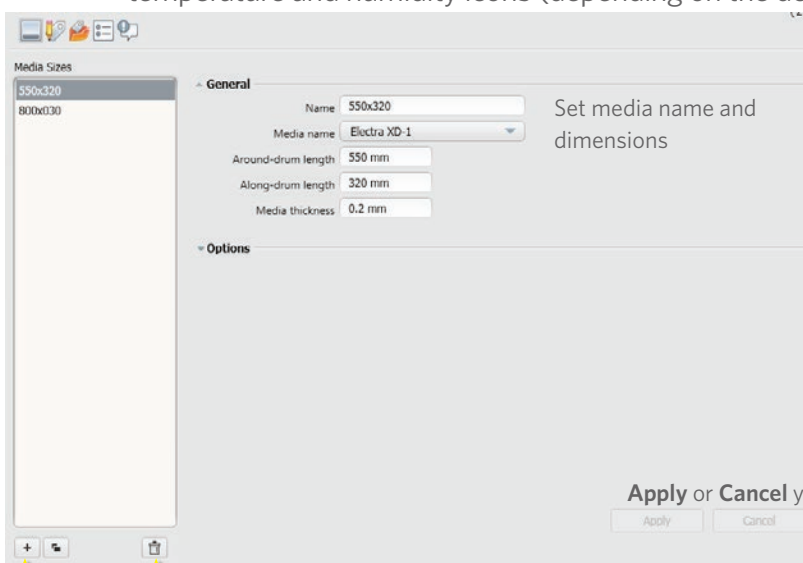
The **Job Messages** pane displays various messages generated for the highlighted job in either the **Active Queue** or **Processed Queue**.

Status bar displays used disk space, workflow connectivity, temperature and humidity icons (depending on the device)

## Configuring Print Console

For detailed information about configuring Print Console using the **Tools** view, see the Print Console Help.

All configurations of Print Console require at least one media size to be set up using the **Media Size Tool**. Process templates and hot folders are only necessary for use with a 1-bit TIFF workflow, and registrations are only used with systems that include a punch unit.



Add a new media size  
Copy an existing media size  
Delete the highlighted media size

How do you manage active and completed jobs?

What do the job status and message icons mean?

Icon	Function
	Cancel a job
	View job processing information
	View TIFF file information
	Move job to top or bottom of queue
	Change job order by one position
	Pause (hold) a job
	Submit paused jobs in the <b>Active Queue</b> or completed jobs in <b>Processed Queue</b>
	Modify job parameters and then submit
	Lock the queue to prevent jobs from being processed at the output device. The locked icon is displayed in the Status.
	Unlock the queue to allow jobs to be processed at the output device. The locked icon will disappear from the Status.

Icon	Meaning
	Job is being processed by output device
	Job separations are sorting into desired imaging order
	Job is waiting to be processed (Exclamation mark indicates high-priority job)
	Job is paused (on hold) until submitted (Exclamation mark indicates high-priority job)
	Job completed successfully (Up-arrow indicates that this job was resubmitted)
	Job canceled (Up-arrow indicates that this job was resubmitted)
	Job failed with an error (Up-arrow indicates that this job was resubmitted)
	Information message
	User prompt message
	Warning message
	Recovery error message

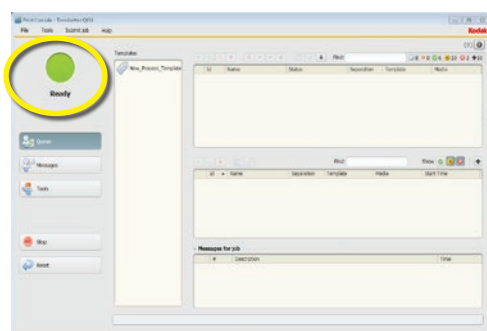
**NOTE:** Some queue management functions may not be available for jobs that were submitted directly to Print Console from Prinergy workflow software (via JDF/JMF).





# IMAGING PLATES

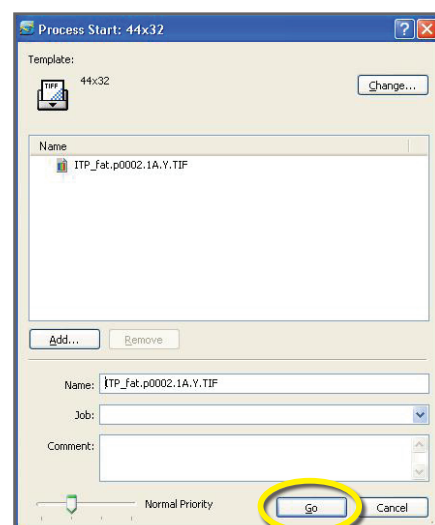
**1** Ensure that the device is ready.



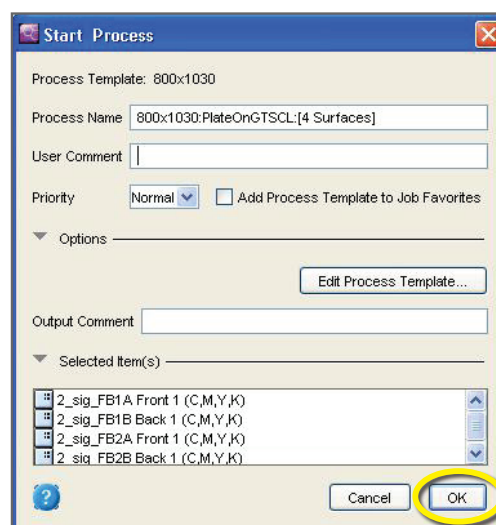
**CAUTION:** Wear protective gloves when handling plates to protect your hands from the sharp edges and corners of the plates. Failure to wear protective gloves may result in minor or moderate injury.

**2** In the workflow software, submit the file.

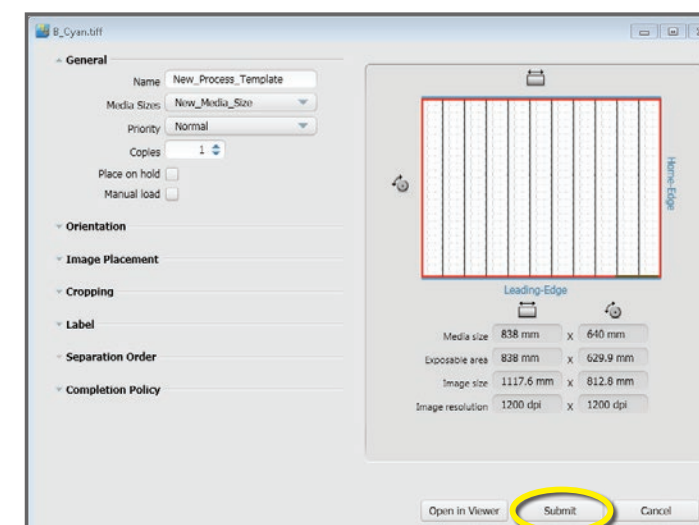
Kodak Prinergy Evo workflow



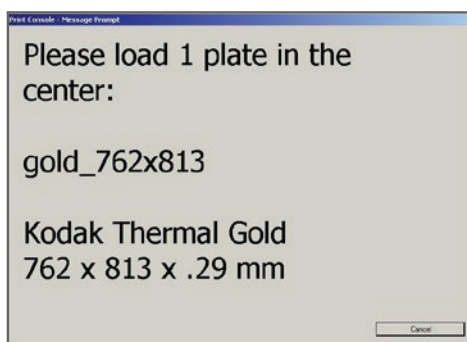
Kodak Prinergy workflow



from within Kodak Print Console



**3** Ensure that the correct plate is available for loading.



**4** Remove the slip sheet.



**5** Position the plate (or plates) on the load ramp.



**6** Lower the plate gently until it touches the registration pins.



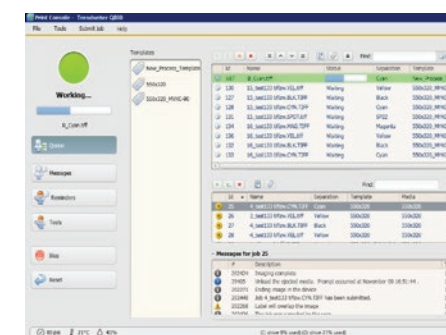
**7** Align the plate with the alignment labels on the load ramp.



**8** Push the start button.



**9** Use the Print Console **Queue** view to follow the progress of the plate through the output device.



**10** Unload the imaged media.





# OPERATOR MAINTENANCE AND OPERATIONS

## Operations

1	Turn off the output device	These operations are required for some of the maintenance procedures listed below.
2	Turn on the output device	

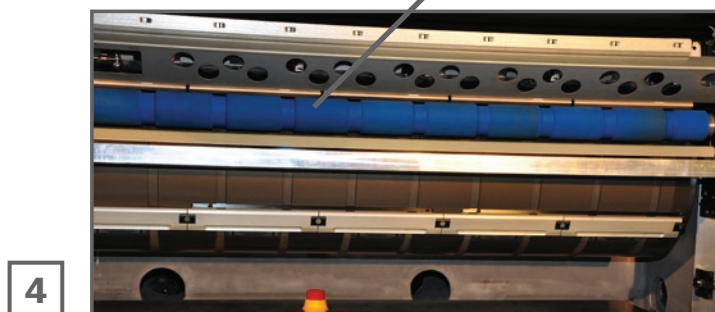
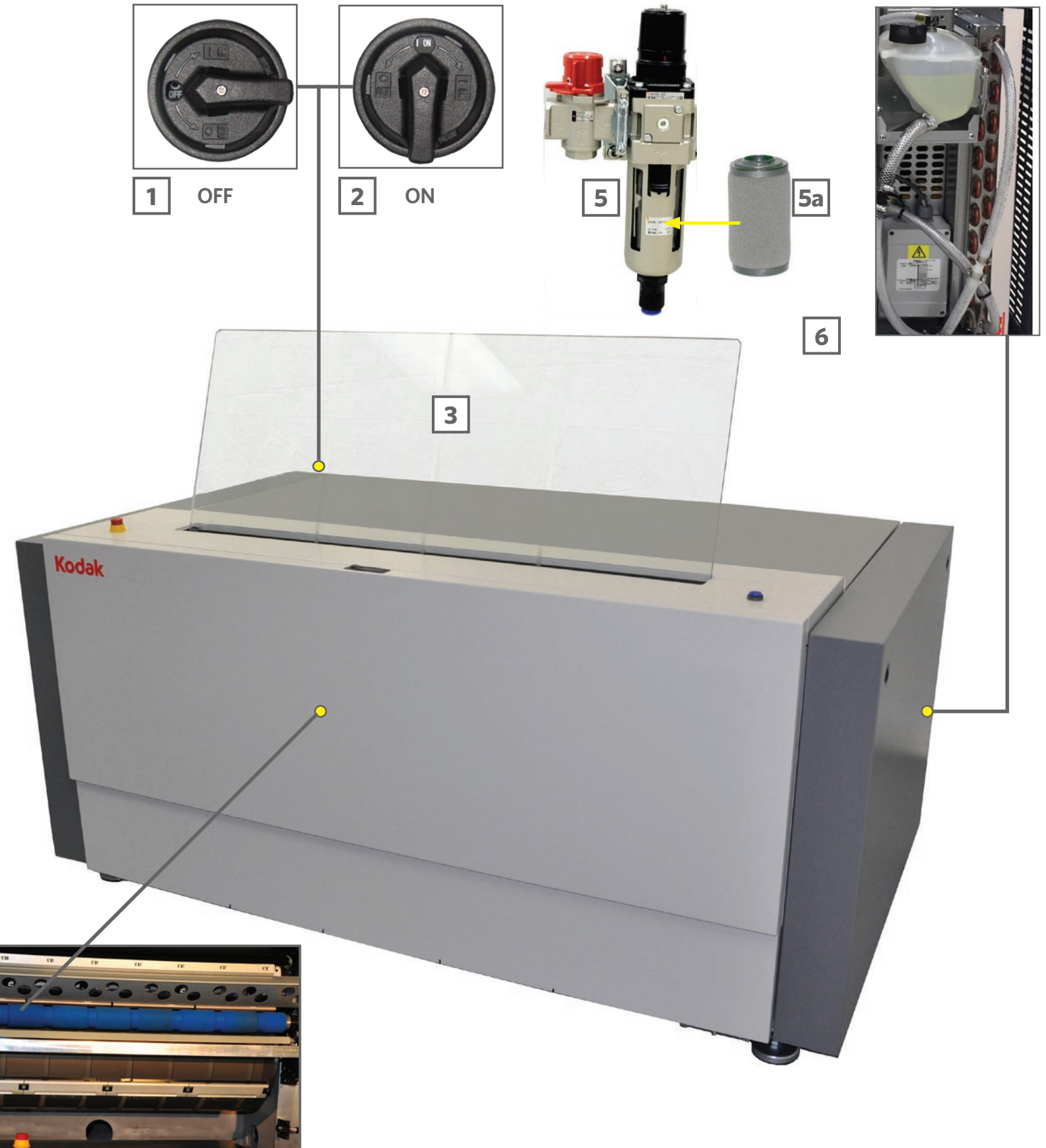
## Maintenance

Use the **Maintenance Reminders** tool to configure the appearance of these tasks in the **Reminders** view. For more information, see the Print Console 5 User Guide.

Part	Task	How often	Date work completed
Exterior surfaces	Clean	Weekly	
3 Load ramp	Clean	Weekly	
4 Plate roller*	Clean	Monthly	
5 Compressed air supply filter bowl*	Inspect	Weekly	
5a Compressed air supply filter (518-05539A replacement kit)*	Replace	Every 6 months, or as needed	
6 Intake air filter (55-0700)*	Replace	Every 6 months, or as needed	
7 UDRC filter (if included) (57-8792E)*	Replace	As needed	

\*Procedures for these maintenance tasks are included in this visual reference guide.

Note: This document is not intended as a substitute for the *Trendsetter Platesetters and Imagers Model TEE Safety Guide for Operators*. See that document for further information. Software may appear differently, depending on the version of Print Console in use.







# INSPECTING OR REPLACING THE COMPRESSED AIR SUPPLY FILTER



The compressed air supply regulator may be:

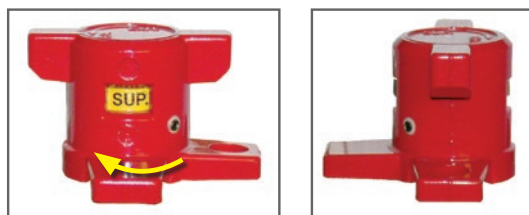
- Mounted on the wall
- Mounted on the back of the platesetter

0.01-micron filter

Use the 0.01-micron filter and the O-rings from the air supply filter replacement kit for this procedure.



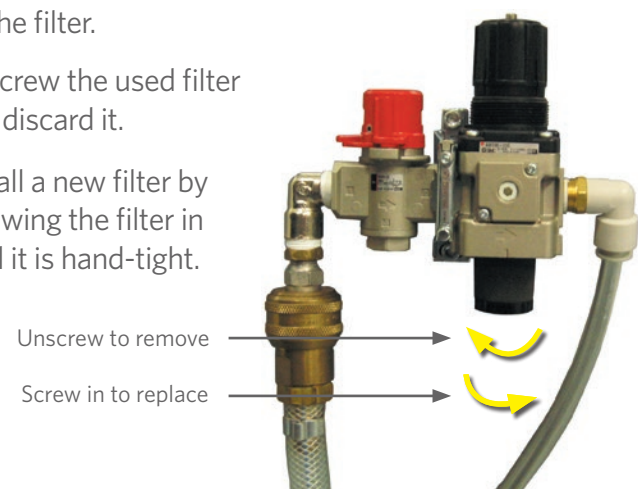
## 2 Turn off the compressed air.



When the valve is in the off position, you can use a padlock to lock it into that position.

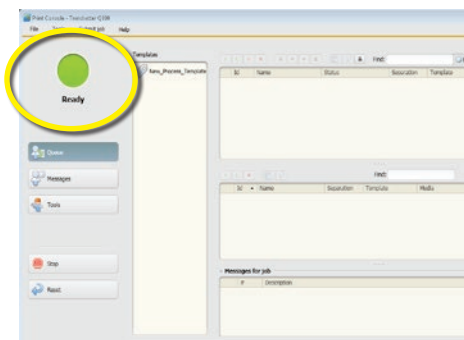
## 5 Replace the filter.

- Unscrew the used filter and discard it.
- Install a new filter by screwing the filter in until it is hand-tight.

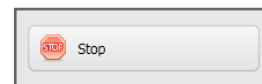


## 1 Take the platesetter offline.

- In the Print Console software, ensure that the platesetter is not currently imaging as shown below.



- Use either the **Stop** operation or **Lock the Queue** to go offline.



Use **Stop** to cancel all active jobs and eject all media before going offline.



**Lock the Queue** to finish and unload active jobs before going offline.

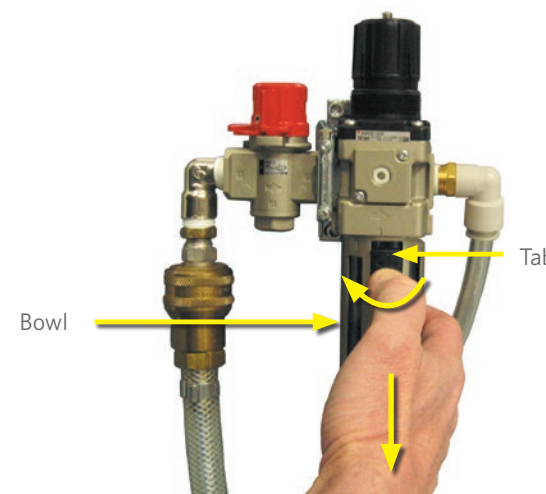


**WARNING:** Turn off the compressed air supply when working on the air supply filters. Failure to turn off the compressed air supply before inspecting or replacing a compressed air supply filter will result in high-pressure air being present in the filter elements and bowl, making disassembly difficult. This could result in possible serious injury from flying parts and a very loud noise that could damage your hearing.

For full details, see the help system and the *Trendsetter Platesetters and Imagers Model TEE Safety Guide for Operators*, both of which you can access from the Print Console **Help** menu.

## 3 Remove the filter bowl.

- Release the lock on the filter bowl by pulling down on the black tab on the front of the filter bowl while rotating the filter bowl one quarter-turn left.
- Pull the filter bowl down and remove it.



## 4 Inspect the filter bowl.



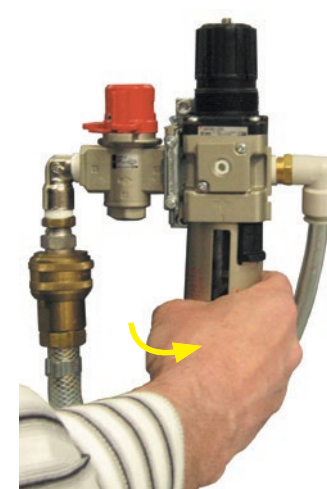
**CAUTION:** If plastic parts with cracks or crazing are exposed to high air pressure, the parts may explode. Contact your service representative if the filter bowl needs to be replaced.

- Check the filter bowl for any damage or deterioration (cracks or crazing).
- Check for water or oil in the filter bowl. If you find water or oil, contact your service representative to have the air supply inspected.
- Perform a visual inspection of the filter. If it appears very dirty, replace it as described in step 5. If it does not need to be replaced, go to step 6.

## 6 Clean inside the filter bowl with mild soap and warm (not hot) water.

## 7 Replace the rubber O-ring at the top of the filter bowl, if necessary.

## 8 Reattach the bowl by pushing it up and turning it to the right until it clicks.



## 9 Turn on the compressed air.



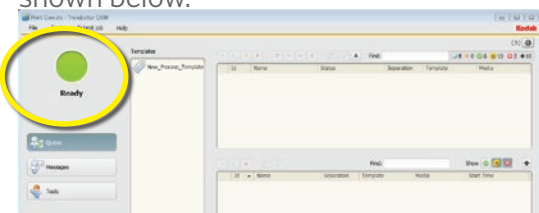


# ACCESSING THE INTERIOR OF THE OUTPUT DEVICE [MODEL TEE]

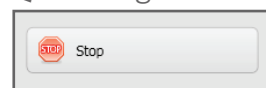
## Removing the front panel

**1** Take the platesetter offline.

**a** In the Print Console software, ensure that the platesetter is not currently imaging plates as shown below.



**b** Use either the **Stop** operation or **Lock the Queue** to go offline.



Use **Stop** to cancel all active jobs and eject all media before going offline.



**Lock the Queue** to finish and unload active jobs before going offline.

**2** Press down the left side of the center latch.



**3** Pry the top of the panel slightly away from the device frame. The right side of the center latch pops up.



**4** Find the two tabs on the frame, and push them toward the center.



**5** Remove the panel and carry it to a safe location.



**WARNING:** When you open a panel, if you suspect that the safety interlock system did not shut down laser sources and/or mechanical movement, use an emergency stop button or the power/emergency stop switch to shut down the device. Secure the power/emergency stop switch in the off position with a padlock, and do not operate the device until it has been approved for operation by an authorized service representative. For full details, see the *Trendsetter Platesetters and Imagers Model TEE Safety Guide for Operators*.



**DANGER:** Do not tamper with the access panel interlock system. Never attempt to operate the platesetter with any of the access panels open, and never attempt to open or remove access panels while the platesetter is imaging plates. For full details, see the *Trendsetter Platesetters and Imagers Model TEE Safety Guide for Operators*.

## Reinstalling the front panel

**1** Position the panel on the front of the device, and push the top of the panel as far as you can toward the device frame.

**2** Push the right side of the center latch down.



**3** Push the panel in toward the frame again.



The magnets on the panel secure the panel in place on the frame.





# CLEANING THE PLATE ROLLER

Clean the plate roller every month. Supplies required: lint-free cloths

**1** Using the procedure on page 6, remove the front panel.

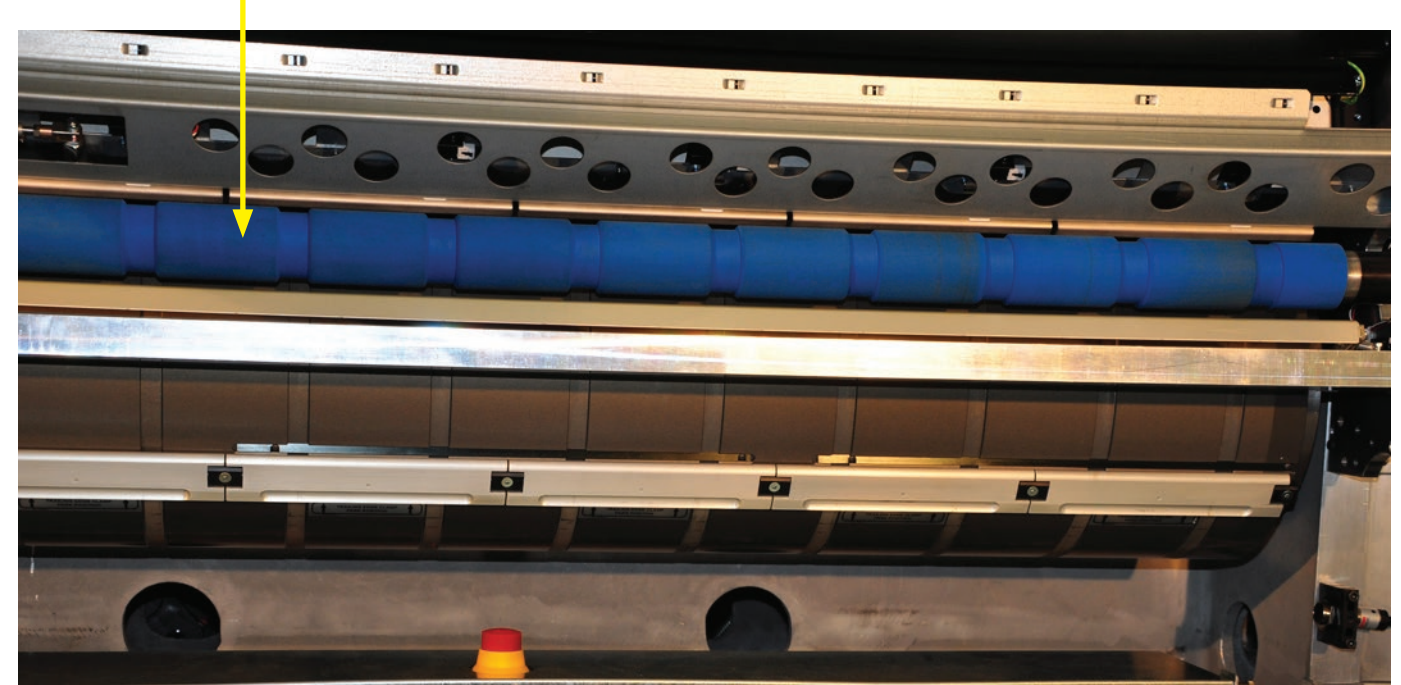
- a** Take the platesetter offline.
- b** Pry the top of the panel slightly away from the device frame.
- c** Press down the left side of the center latch.
- d** Find the two tabs on the frame, and push them toward the center.
- e** Remove the panel and carry it to a safe location.



**WARNING:** To avoid the risk of electrical shock, do not allow liquids to run freely into the output device. For full details, see the *Trendsetter Platesetters and Imagers Model TEE Safety Guide for Operators*.



**2** Locate the blue plate roller.



**3** Dampen a lint-free cloth with water, and slide the cloth over the plate roller.



**4** Using the procedure on page 6, reinstall the front panel.

- a** Position the panel on the front of the device, and push the top of the panel as far as you can toward the device frame.
- b** Push the right side of the center latch down.
- c** Push the panel in toward the frame again.







# REPLACING THE INTAKE AIR FILTER

The intake air filter is located behind the panel on the right side of the output device.



Intake air filter location

Intake air filter (part number 55-0700)



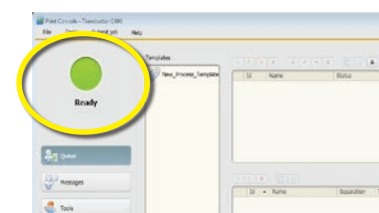
**DANGER:** Do not tamper with the access panel interlock system. Never attempt to operate the platesetter with any of the access panels open, and never attempt to open or remove access panels while the platesetter is imaging plates. For full details, see the *Trendsetter Platesetters and Imagers Model TEE Safety Guide for Operators*.



**WARNING:** When you open a panel, if you suspect that the safety interlock system did not shut down laser sources and/or mechanical movement, use an emergency stop button or the power/emergency stop switch to shut down the device. Secure the power/emergency stop switch in the off position with a padlock, and do not operate the device until it has been approved for operation by an authorized service representative. For full details, see the *Trendsetter Platesetters and Imagers Model TEE Safety Guide for Operators*.

**1** Take the platesetter offline.

**a** In the Print Console software, ensure that the platesetter is not currently imaging as shown below.



**b** Use either the **Stop** operation or **Lock the Queue** to go offline.



Use **Stop** to cancel all active jobs and eject all media before going offline.



**Lock the Queue** to finish and unload active jobs before going offline.

**2** Open the hinged top panel.

**a** From the rear of the device, pry the top of the panel upward, slightly away from the device frame.



**b** Press down the left side of the center latch.



The right side of the center latch pops up.

**c** Find the two tabs on the frame, and push them toward the center.



**d** Lift open the top panel.



**3** Remove the right-side panel.

**a** Use a flat-head screwdriver to rotate and unlatch the fasteners that secure the right-side panel to the device.



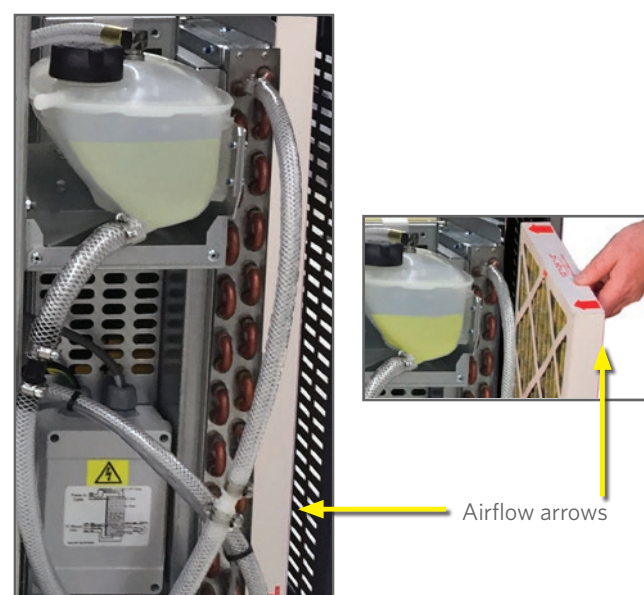
**b** Remove the panel and carry it to a safe location.

**4** Remove the old intake air filter.



If there is debris inside the filter frame, vacuum it.

**5** Install the new intake air filter. Ensure that the airflow arrows point inward.



Airflow arrows

**6** Position the side panel in its former location and use the flat-head screwdriver to rotate and latch the fasteners.



**7** Close the hinged top panel.

**a** Push the top panel down as far as you can toward the device frame.

**b** Push the right side of the center latch down.



**c** Push the top panel down toward the frame again.



# REPLACING THE UNIVERSAL DEBRIS REMOVAL CABINET FILTER

Certain media types require a Universal Debris Removal Cabinet (UDRC) to filter potentially harmful airborne emissions. If you plan to switch media — or if you are uncertain whether your current media requires a UDRC — contact your service representative.

This procedure applies only to platesetter systems with UDRCs. Media types that require debris removal are not qualified for use with Achieve and Veriset platesetters. Thus, these platesetters are not available with a UDRC.

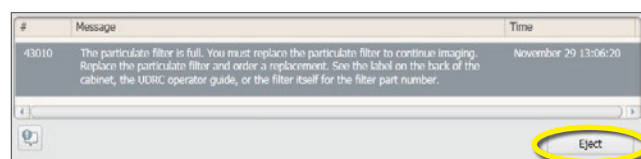


**WARNING:** Use only qualified media. Using unqualified media may expose you to noxious gaseous emissions in excess of applicable regulatory limits. This may result in discomfort, illness, injury, and/or disability.



**WARNING:** Particulate airborne emissions that are not properly filtered can endanger your health. For a list of airborne emissions that pertain to the media you are using, see the manufacturer's Material Safety Data Sheet (MSDS) or contact the manufacturer or distributor directly.

The Print Console software indicates when a UDRC filter is full and needs to be replaced.



When this message appears, you will not be able to continue imaging until the filter is replaced. Click **Eject** to eject any plates that are in the platesetter.

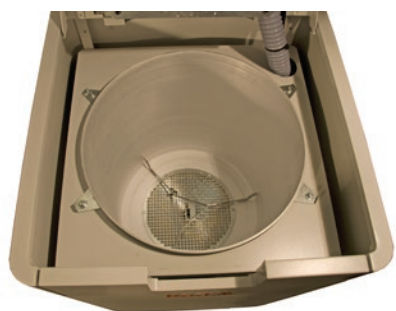
**Best practice:** Always have a spare UDRC filter on hand.

**3** Clean the interior of the UDRC filter compartment.

**a** Vacuum the dust collected around the tube in the center of the inner lid. Remove all filter residue from the inner lid and interior surface.



**b** Wipe the UDRC thoroughly with a clean, damp cloth.



**WARNING:** Do not let water run into the UDRC. This can result in serious personal injury or death from electrical shock, as well as damage to the device.

## IMPORTANT:

If you are sensitive to the particulate collected by the UDRC filter, wear a smock, protective gloves, and respiratory protection while replacing the filter. Wash your hands thoroughly afterwards.

**1** Open the cabinet lid. Press down on the lid while releasing the latch with your fingers, and then lift the lid.



**2** Remove the filter.



**CAUTION:** The black hole in the top of the particulate filter has a very sharp edge. Do not touch the hole when lifting the filter to avoid cutting your fingers.

**a** Using the handle, lift the filter straight up.

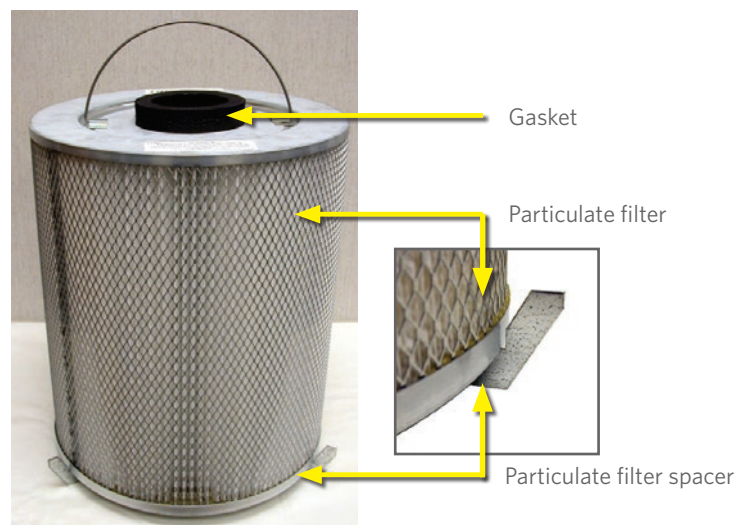
Place the used filter in a bag for disposal. A bag is provided with the replacement filter.



**b** Remove the particulate filter spacer.



**4** Reinstall the spacer and then the clean filter, ensuring that the filter is fully seated on the particulate filter spacer.



**5** Close the cabinet lid. Press down on the lid, until you hear the latch click.

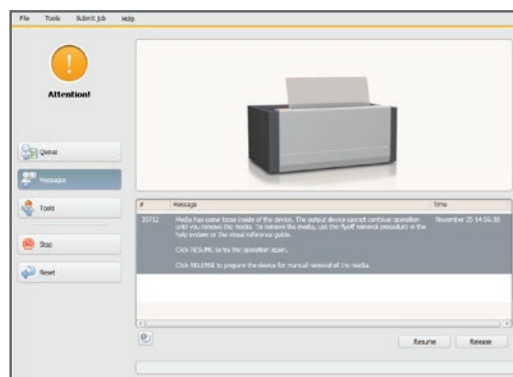






# REMOVING A FLYOFF

The device suspends activity. The Print Console **Messages** view displays a recovery message telling you that the output device detected a flyoff and that you must remove loose media from within the device.



**1** Use the procedure on page 6 to remove the front panel.



**CAUTION:** If you have an implanted cardiac pacemaker or automatic implantable cardioverter defibrillator (AICD), keep the trailing-edge clamps more than 7 cm (2.75 in.) away from your implant, especially when holding the clamps in your hands to reposition them on the drum.



For full details, see the *Trendsetter Platesetters and Imagers Model TEE Safety Guide for Operators*.

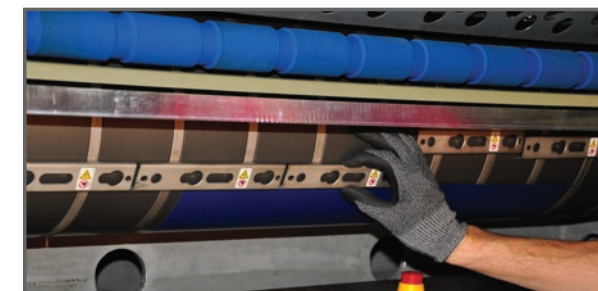
**2** Locate the loose media inside the device.

If the loose media is not attached to the drum, then remove it from the device and proceed to Step 7.

If the loose media is still attached to the drum, prepare to remove it by rotating the drum to expose the trailing-edge clamps.



**3** Slide the trailing-edge clamps off the plate.



**CAUTION:** Wear protective gloves when handling plates to protect your hands from the sharp edges and corners of the plates. Failure to wear protective gloves may result in minor or moderate injury.

**4** Fold over the corners of the plate.



**5** Press the leading-edge clamps to free the plate.



Ensure that no debris is left behind in the clamp.

**6** Reposition the trailing-edge clamps:

**a** Align the trailing-edge clamps. Ensure that the steel tabs on the clamp are centered on the steel straps on the drum, and that the clamps are evenly spaced.



**b** Slide the trailing-edge clamps along the drum until they touch the leading-edge clamps (park position).

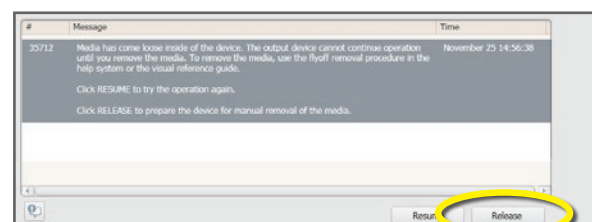


**7** Use the procedure on page 6 to reinstall the front panel.

**8** In the Print Console software, respond to the prompts as follows:

If you needed to remove media from the drum, click **Release** at the first prompt, **Media Removed** at the next prompt, and **Resume** at the last prompt.

If you did not need to remove media from the drum, click **Resume** at the first prompt.



Leading-edge clamp      Trailing-edge clamp



Even spacing between trailing-edge clamps

Eastman Kodak Company  
343 State Street  
Rochester, NY 14650 U.S.A.

© Kodak, 2021. All rights reserved.  
Kodak and the Kodak logo are trademarks.

To learn more about solutions from Kodak,  
visit <http://graphics.kodak.com>.  
Subject to technical change without notice.

